

ASLA 2025 SPONSORSHIP OPPORTUNITIES

ASLA 2025 
Beyond
BOUNDARIES

Conference on Landscape Architecture
OCTOBER 10-13 • New Orleans

Image: iStockphoto.com, Kruck20



American Society of
Landscape Architects



ASLA 2025 Conference on Landscape Architecture

The **ASLA 2025 Conference on Landscape Architecture** celebrates the power of landscape architects to create innovative, resilient solutions that transcend traditional physical, political, and cultural barriers. Each year, landscape architects, like you, take on greater and more diverse roles to address environmental challenges, especially the intensifying effects of climate change. You design and build projects that influence entire watersheds, regions, and ecosystems. Your vision and expertise combine to improve communities and enhance lives on a broad scale.

This year's theme, "***Beyond Boundaries,***" highlights your expanding role as leaders in tackling environmental challenges and designing sustainable, equitable spaces for all. Join us to connect with interdisciplinary partners—scientists, engineers, policymakers, and citizens—as we explore how landscape architecture is shaping a resilient, inclusive, and thriving world by pushing beyond all boundaries.

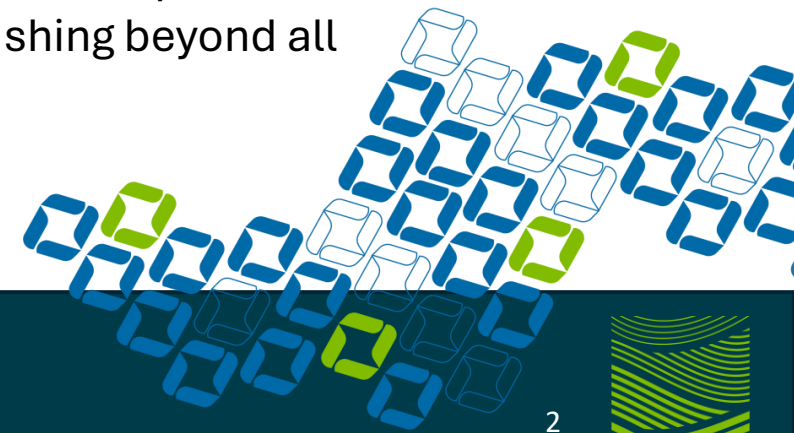


Table of Contents

Education Sponsorship Opportunities >>>>>>>>>>	Page 4
Product Engagement Sponsorship Opportunities >>>>>>>>>>	Page 15
Celebration Sponsorship Opportunities >>>>>>>>>>	Page 18
Networking Sponsorship Opportunities >>>>>>>>>>	Page 25
Branding Sponsorship Opportunities >>>>>>>>>>	Page 31
Branding Pring Signage Sponsorship Opportunities >>>>>>>>>>	Page 39
Branding Digital Signage Sponsorship Opportunities >>>>>>>>>>	Page 46
High Engagement Sponsorship Opportunities >>>>>>>>>>	Page 52
Sponsorship Benefits Explained >>>>>>>>>>	Page 60





ASLA 2025
Beyond  **BOUNDARIES**

Conference on Landscape Architecture
OCTOBER 10-13 • New Orleans

EDUCATION

General Session

Align your brand with the cornerstone event of the conference by sponsoring the General Session. Gain maximum visibility with attendees through branded signage, opening acknowledgments, and exclusive opportunities to address the audience.

\$30,000 | One available | Premier level benefits

Unique sponsorship benefits include

- Three-minute speaking opportunity or welcome video
- Public recognition of sponsorship from the podium



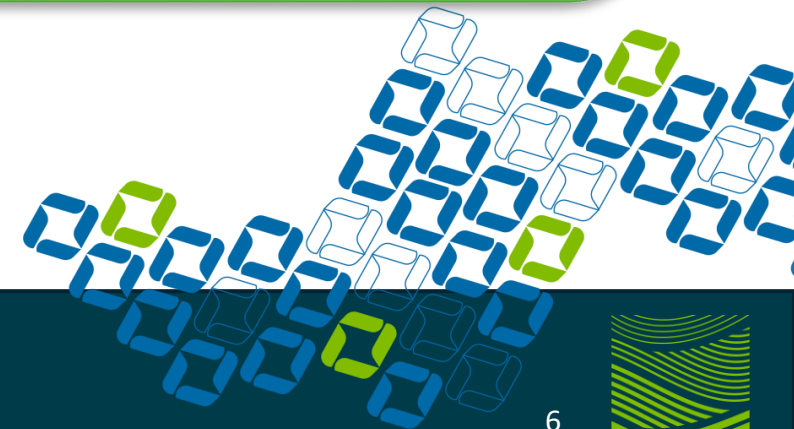
Learning Lab Classroom

Support professional development by sponsoring a Learning Lab Classroom. Your brand will be featured in educational sessions attended by industry professionals seeking insights and training.

\$27,500 | Two available | Premier level benefits

Unique sponsorship benefits include

- Logo present on exterior of Learning Lab
- Assistance from ASLA Education team to gain approval for three Learning Lab sessions
- Sponsor must be LA CES certified



Spotlight Room

Showcase your products and brand in a premium space designed for visibility and interaction. The ASLA Education team will program this room with sessions presented in diverse formats.

\$20,000 | One available | Distinguished level benefits

Unique sponsorship benefits include

- Logo present on exterior of session room
- Opportunity to provide furniture for interior and exterior of room in 400sqft space *labor rates apply
- Opportunity to introduce education sessions taking place in the room over four days
- Host one reception after-hours in Spotlight room



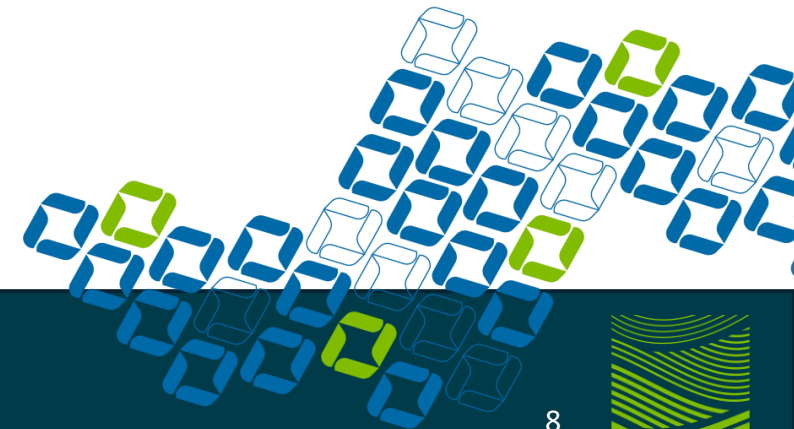
SKETCH! Studio

SKETCH! Studio is one of the most highly engaged spaces on the EXPO floor. This space is home to sketch workshops scheduled throughout the conference that fill to capacity for each scheduled event. These sessions buzz with excitement.

\$15,000 | One available | Strategic level benefits

Unique sponsorship benefits include

- Logo present on exterior of studio space
- Includes sponsor recognition of the Sketch field session
- Opportunity to introduce sketch session
- Opportunity to distribute and sell product
- Opportunity to sell product near the studio



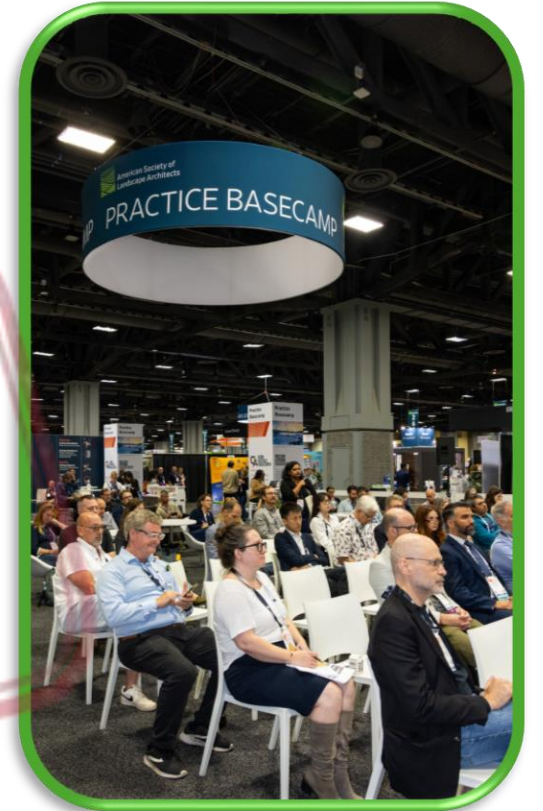
Practice Basecamp

Located on the EXPO Floor, ASLA's Practice Basecamp offers a range of practice-focused programming presented in a diverse format of learning environments and session styles. Sponsorship of this high-profile space will allow your brand exposure to hundreds of attendees in this networking and education space.

\$12,000 | One available | Champion level benefits

Unique sponsorship benefits include

- Company brand associated with a dedicated space that showcases thought leadership and fosters meaningful industry discussions between leaders in the field
- Logo present on exterior of Practice Basecamp entrance unit
- Opportunity to distribute branded products within Practice Basecamp



Game Changers

Dovetail your brand with solutions of the future. We are inviting attendees to share ideas of what the profession should be doing tomorrow. During these fast-paced, innovative talks, presenters will have just seven minutes to share game-changing ideas. Game Changers is activated through social media and commences onsite at the EXPO. Take advantage of full benefits if secured by April 2025.

\$10,000 | One available | Champion level benefits

Unique sponsorship benefits include

- Sponsor recognition included in social media promotional campaign
- Opportunity for company employee to provide the event emcee and one judge for the Game Changers panel
- Sponsor to provide financial prizes for finalist



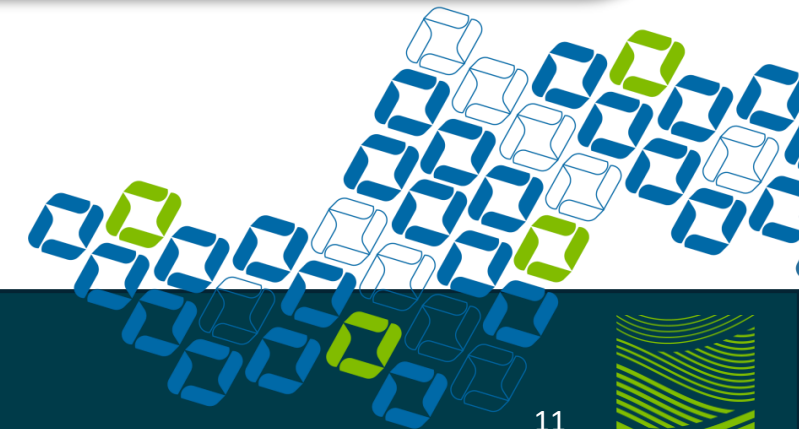
LARE Prep Demystified

Students and Emerging Professionals desire to know more about the LARE exam and becoming licensed. This sponsor will connect with this audience through participation in the popular "Demystifying the LARE Exam" session, plus receive naming rights to and participation at the "LARE Prep Café".

\$6,000 | One available | Engagement Opportunity

Unique sponsorship benefits include

- Logo and booth space presence in the Emerging Professionals Zone
- Speaker participation on panel of Demystifying Session
- Recognized as sponsor of the Demystifying Session



Learning Lab Session

Build brand awareness and generate additional sales by demonstrating your thought leadership and expertise in an ASLA Learning Lab, live in the EXPO. Submitting exhibitors must be (or become) a LA CES education provider. Learning Labs cannot include any proprietary information. Learning Labs traditionally yield great attendance!

\$5,000 | Five available | Engagement Opportunity

Unique sponsorship benefits include

- Session listed in conference full schedule
- Learning Labs may be reserved in 60-minute blocks during EXPO hours, allowing 50 minutes of instruction time
- The presentation area will be equipped with a screen and projector, and a podium



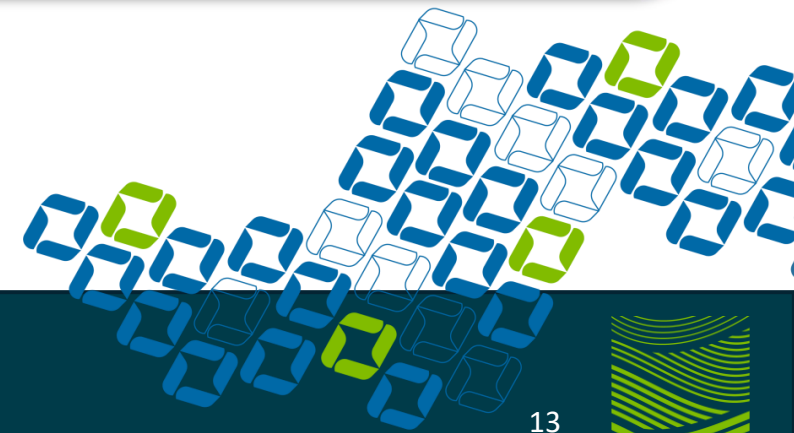
Lunch and Learn

Engage attendees on the EXPO floor by facilitating dynamic roundtable discussions over lunch. Each table will focus on a specific topic chosen by you the sponsor, providing a unique platform for meaningful conversations.

\$1,500 | Five available | Engagement Opportunity

Unique sponsorship benefits include

- Sponsor and each attendee receives a complimentary box lunch
- Company representative to facilitate table discussion
- Table topic and facilitator name listed in the conference mobile app if information is provided by September 1



Field Sessions

Field sessions are extremely popular with attendees year after year. The sponsor of each individual session will be recognized during the kick-off of the field session, opportunity to spend the day with a captured audience of participants and provide promotional giveaways during the tour. Great opportunity to highlight company product if used in a project highlighted on the sponsored field session.

\$1,500 | 15+ available | Engagement Opportunity

Unique sponsorship benefits include

- Two complimentary tickets to sponsored field session
- Logo present on field session signage and in the conference mobile app





ASLA 2025
Beyond  BOUNDARIES

Conference on Landscape Architecture
OCTOBER 10-13 • New Orleans

PRODUCT ENGAGEMENT

Product Furniture Lounge

Highlight your furniture product in a high-traffic area on the second floor where education sessions take place Friday to Monday by sponsoring a networking lounge. Your sponsorship includes branding and product placement opportunities in a 400sqft footprint. *Labor rates apply at \$1.38 per lb.

\$15,000 | Two available | Strategic level benefits

Unique sponsorship benefits include

- Opportunity to introduce seven education sessions taking place in nearby session rooms – assigned by ASLA
- Opportunity to host small group meet-ups in the networking lounge, no audio visual available
- Opportunity to provide give-away within footprint



Plant Sponsorship

Got plants or flowers? Highlight your variety of plants throughout the conference. Work directly with the conference team to select appropriate size of trees, flowers, and shrubbery for placement throughout the convention center.

\$5,000 | One available | Engagement Opportunity

Unique sponsorship benefits include

- Opportunity to provide plants and shrubs to be displayed throughout the convention center
- Opportunity to coordinate placement of plants onsite
- Collaborate with conference team for sponsor recognition signage and placement





ASLA 2025
Beyond  **BOUNDARIES**

Conference on Landscape Architecture
OCTOBER 10-13 • New Orleans

CELEBRATIONS

EXPO Opening Reception

Kick off the EXPO! Recognition as one of three (3) presenting sponsors of the 2025 EXPO Opening Reception. Connect with attendees in a lively and engaging atmosphere. Your brand will be highlighted through signage, announcements, and interactive opportunities.

\$30,000 | Three available | Premier level benefits

Unique sponsorship benefits include

- Your logo prominently displayed on all Opening Reception signage and advance digital marketing promotions
- Company will be acknowledged during live announcements, reinforcing your leadership role in shaping the event's energy and impact
- Amplify your impact with post-event recognition in follow-up communications and social media highlights



Council on Fellows Reception Sponsor

Join friends and colleagues for an elegant evening to honor the newest members of the ASLA Council of Fellows. Council of Fellows members are recognized for their extraordinary work, leadership, knowledge, and service to the profession. Formal attire is appropriate.

\$20,000 | One available | Distinguished level benefits

Unique sponsorship benefits include

- Your logo prominently displayed on all reception signage and advance digital marketing promotions
- Sponsor will receive two complimentary tickets
- Sponsor logo printed on reception napkins



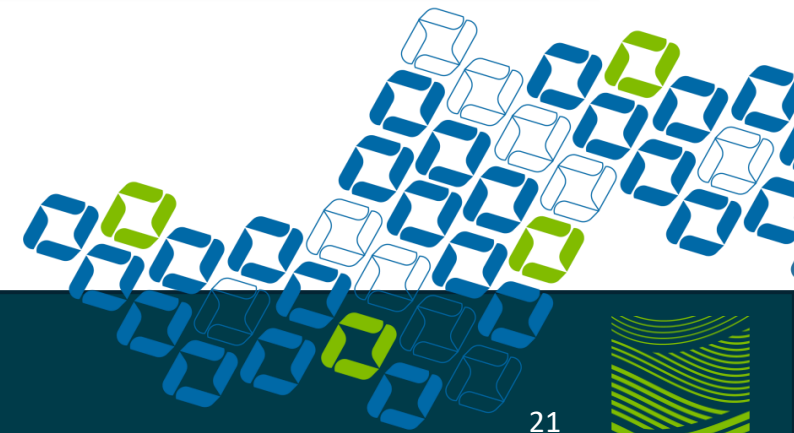
National Leadership Lunch

Engage with key decision-makers by sponsoring the National Leadership Lunch. Host the ASLA Board of Trustees and Chapter Presidents Council and kick off an exciting event with leaders of allied design organizations. Sponsorship includes a two-minute welcome from sponsor and onstage recognition.

\$16,000 | One available | Strategic level benefits

Unique sponsorship benefits include

- Your logo prominently displayed on event signage
- Two-minute welcome to event from sponsor on stage
- Recognition of sponsorship from stage



Welcome Reception

Welcome the national ASLA Board of Trustees and Chapter Presidents to the conference through a casual reception. Sponsorship includes your logo on attendee drink tickets and branded napkins. You also receive six (6) complimentary invitations for your company employees to attend the event and network with influencers in the field.

\$12,000 | One available | Champion level benefits

Unique sponsorship benefits include

- Your logo prominently displayed on event signage
- Branded napkins utilized at event
- Sponsor recognition in advance attendee communications promoting the reception to leadership



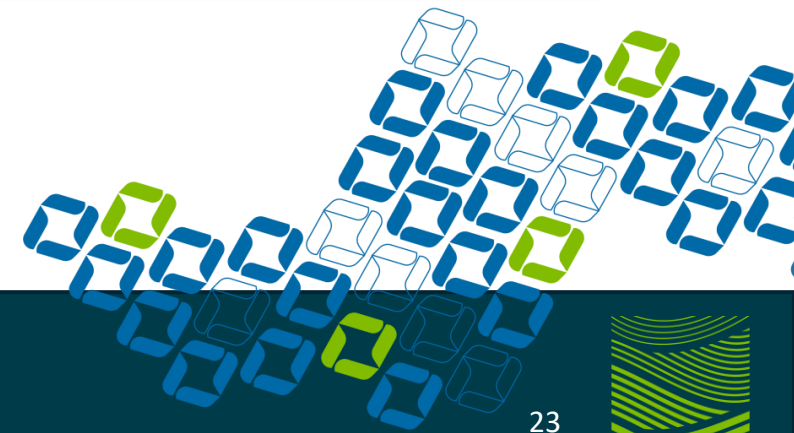
Presidents Lunch

ASLA presents its highest honors at the President's Lunch. The program includes the induction of new officers, recognition of outgoing officers, Honors and Awards, and the President's Medal presentation.

\$10,000 | One available | Champion level benefits

Unique sponsorship benefits include

- Your logo prominently displayed on event signage
- Three-minute video to play during the program. Sponsor to provide the video
- Two complimentary invitations to attend lunch
- Recognition of sponsorship from stage



LABash Block Party

There will be more than fifty schools participating in this event on the EXPO floor. Each school will be showing their school spirit with a designated table. Attendees will be invited to the sponsor's EXPO booth at the end of the reception to learn which schools are walking away as winners.

\$6,000 | One available | Engagement Opportunity

Unique sponsorship benefits include

- Logo featured in promotions if confirmed by April 2025
- Winners announced from sponsor booth onsite
- Company representative to serve as an official judge





ASLA 2025
Beyond  BOUNDARIES

Conference on Landscape Architecture
OCTOBER 10-13 • New Orleans

NETWORKING

Executive Leadership Lunch

Host an exclusive lunch for executives in the field of landscape architecture, limited to 100 guests. This premium sponsorship positions your brand with top decision-makers in the industry, fostering valuable connections in an intimate setting. Align your company with leadership and innovation while making a lasting impression on key influencers.

\$25,000 | One available | Distinguished level benefits

Unique sponsorship benefits include

- Your logo prominently displayed on lunch signage and advance digital marketing promotions
- Sponsor will receive two complimentary tickets to the lunch
- Sponsor recognition from the podium
- Sponsor opportunity to distribute gifts to attendees



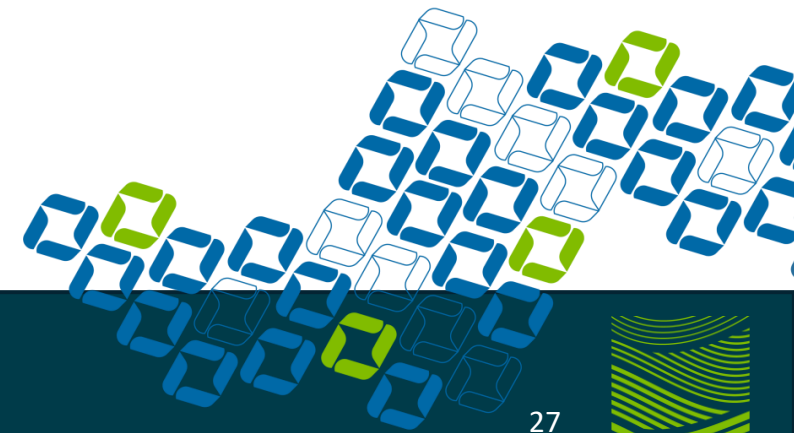
EXPO Breakfast

The Sunday breakfast is a popular attendee benefit to begin the busy day with a healthy meal. Food stations are located throughout the EXPO hall with sponsor recognition at each breakfast station. Branding benefits include branded signage at the station and branded napkins.

\$20,000 | One available | Distinguished level benefits

Unique sponsorship benefits include

- Your logo prominently displayed at each breakfast station
- Branded napkins located at each breakfast station
- Sponsor recognition in advance attendee communications promoting the breakfast



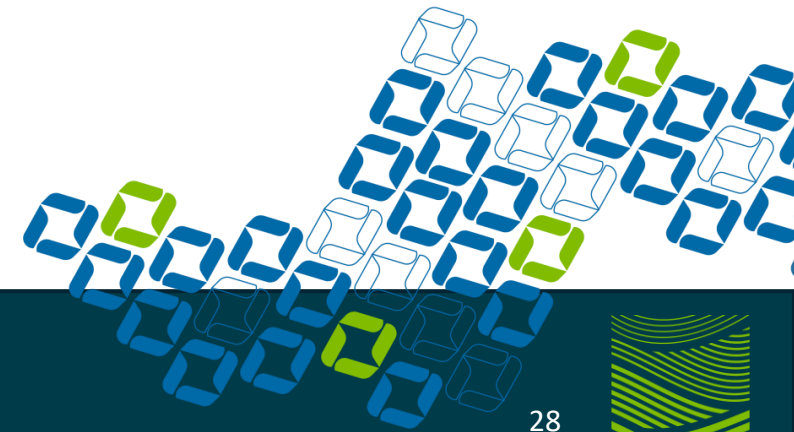
Emerging Professionals Zone

Emerging professionals are the future decision makers of our field, and we want to show them how important they are! We have created an Emerging Professionals Zone. This zone is home to the Student Awards Theater, LABash, Land8, LARE Prep Café, and much more. Get your brand in front of a new audience.

\$10,000 | One available | Champion level benefits

Unique sponsorship benefits include

- Company brand associated with a dedicated space that showcases thought leadership and fosters meaningful industry discussions between leaders in the field
- Logo present at the entrance of the Emerging Professionals Zone
- Opportunity to distribute branded products within space



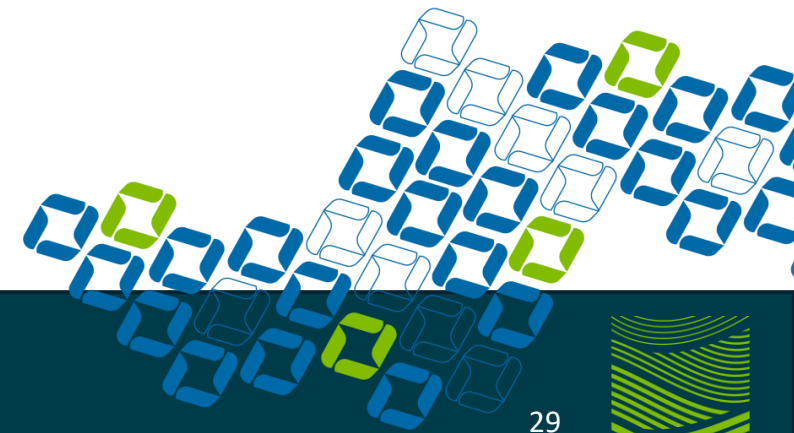
First Timer Orientation

Welcome newcomers to the conference by sponsoring the First Timer Orientation. Your brand will be associated with a helpful and engaging introduction to the ASLA Conference on Architecture.

\$10,000 | One available | Champion level benefits

Unique sponsorship benefits include

- Opportunity to co-host an online orientation for first time professional attendees
- Opportunity to host a daily onsite meet-up for first time professional attendees
- Sponsor logo included in advance attendee communications for professional first-timer tips for a great conference experience



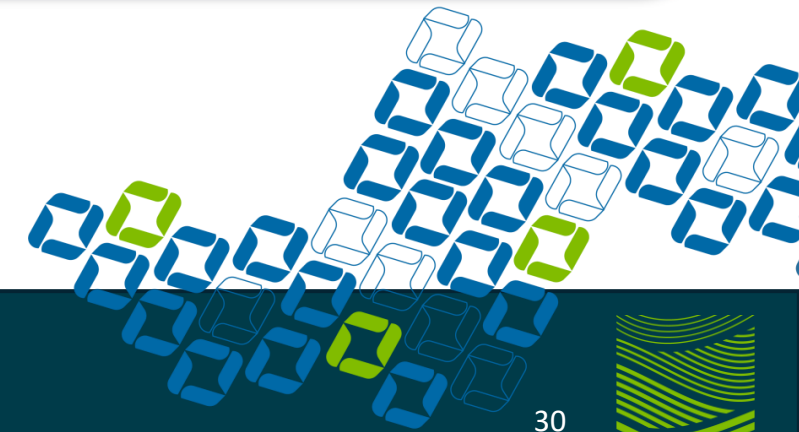
Student Volunteer Program

This sponsorship supports students in gaining valuable hands-on experience and contributes to covering their perks, such as conference registration. As a sponsor, enjoy prominent visibility with your company logo featured on signage at the volunteer booth. Elevate your brand while empowering the next generation professionals.

\$10,000 | One available | Champion level benefits

Unique sponsorship benefits include

- Logo featured in student volunteer email communication
- Logo featured on signage at volunteer check-in booth
- Logo featured on button worn by volunteers onsite at the conference
- Sponsor logo included in advance attendee communications for professional first-timer tips for a great conference experience





ASLA 2025
Beyond  BOUNDARIES

Conference on Landscape Architecture
OCTOBER 10-13 • New Orleans

BRANDING

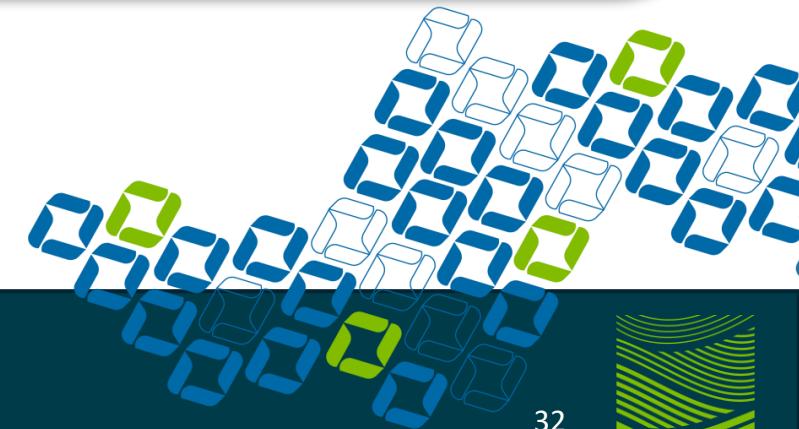
Lanyard Sponsor

Put your brand front and center throughout the conference by sponsoring the lanyards worn by every attendee. Your logo will travel across the event, ensuring constant visibility. Every conference participant receives a lanyard at registration and is required to wear it for all official conference events

\$30,000 | One available | Premier level benefits

Unique sponsorship benefits include

- Your logo prominently displayed on each lanyard
- Sponsor included in advance communications when possible



Mobile App Sponsor

Increase your visibility and enhance your company image before, during, and after the event. Conference attendees use the mobile app to access daily schedules, networking and social event information, maps, and exhibitor information. An onsite program will not be printed this year making the mobile app unbelievably valuable to attendees.

\$20,000 | One available | Distinguished level benefits

Unique sponsorship benefits include

- Your logo prominently displayed within the mobile app
- Sponsor included in advance communications when possible
- Sponsor recognition at conference mobile app help desk



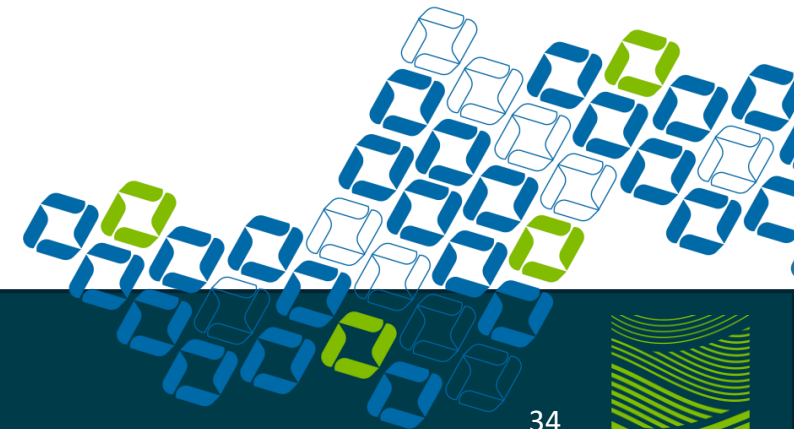
Hotel Key Card

Elevate your brand visibility by sponsoring the conference hotel key card at the headquarters hotel. As attendees access their accommodations, your logo will be prominently displayed, ensuring repeated exposure throughout their stay. This strategic placement offers unparalleled brand recognition, leaving a lasting impression on conference participants.

\$12,000 | One available | Champion level benefits

Unique sponsorship benefits include

- Exclusive hotel key card sponsor for attendees staying at the conference headquarter hotel
- Sponsorship recognition on the conference registration webpage



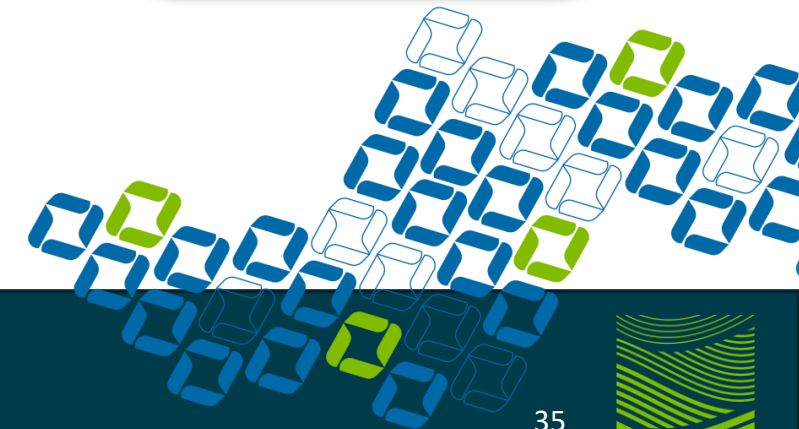
EXPO Map

The conference map is an invaluable tool to every conference attendee, both before and during the conference, as they plan their time and locate activities and exhibitors on the EXPO floor. Take advantage of this opportunity and put your brand name “top-of-mind.”

\$10,000 | One available | Champion level benefits

Unique sponsorship benefits include

- This sponsor will receive logo recognition on the online map, the map within the conference mobile app, and a map at the entrance of the EXPO floor
- Logo recognition on the EXPO Map printed in Landscape Architecture Magazine if confirmed by April 2025



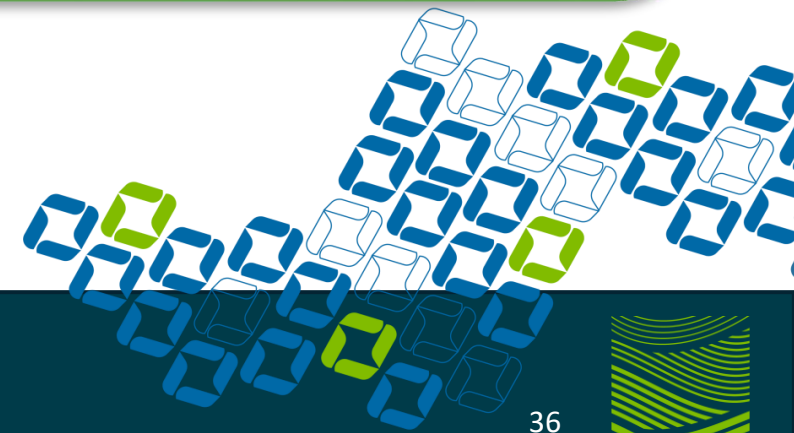
Daily Insights – Conference Newsletter

Reach attendees directly in their inboxes by sponsoring the conference *Daily Insight* Email. Your logo will appear alongside essential event updates in the top banner of the newsletter. This email performed well in 2024 with an average open rate of 54% and average click rate of 8%!

\$10,000 | One available | Champion level benefits

Unique sponsorship benefits include

- Sponsor will receive logo recognition in the top banner of the daily conference communication for five consecutive days
- Opportunity to provide one announcement in the body of the newsletter 300 characters or less



Daily Insights – Conference Newsletter

Reach attendees directly in their inboxes by purchasing a **banner ad** in the conference *Daily Insight* Email. Your ad will appear in the body of the message alongside essential event updates. This email performed well in 2024!

Average open rate = 54% | Average click rate = 8%

\$1,000 | Eight available | Engagement Opportunity

Unique sponsorship benefits include

- One banner ad placed in the daily conference newsletter



Registration is Open!
Located in the Convention Center Lobby.
Mobile App, Student Volunteer, Special Services, and Potomac Host Chapter booths located next to registration
Mon: 7:30am-5pm | Tue: 8am-5pm | Wed: 6:30am-2pm
Sponsored by:
IRONSMITH

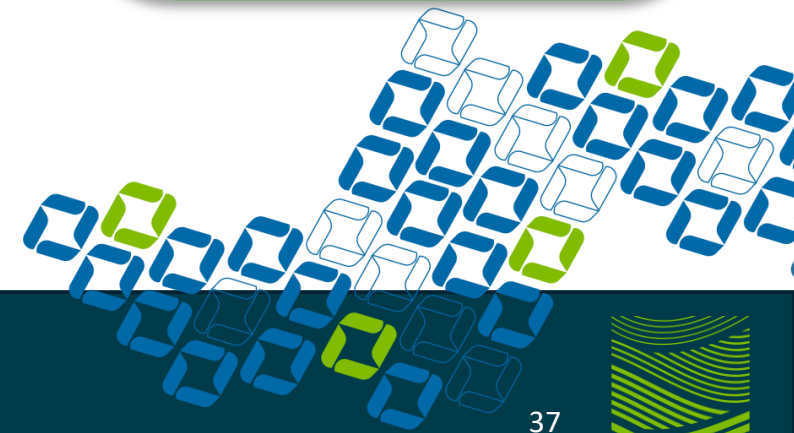
Key Information:

Download the Mobile App: Start building your schedule, exploring the EXPO floor map, and connect with other attendees. [Apple](#) | [Google Play](#). Use your email and registration ID to login. Mobile App sponsored by [Permaloc](#).

Special Events Happening Today: [LABash Block Party](#), [ASLA Student and Professional Awards Ceremony](#), [ASLA 125th Anniversary Celebration Presented by Land F/X](#), [WxLA Annual Gathering and Celebration of WxLA Scholars](#)

Offset Your Carbon Emissions: Visit the Carbon Offset booth next to registration to help ASLA achieve our [Climate Action Plan](#) goals with the [National Indian Carbon Coalition \(NICC\)](#). Also connect with our lead carbon offset sponsor, [Bartlett Tree Experts](#).

 National Indian Carbon Coalition  BARTLETT TREE EXPERTS



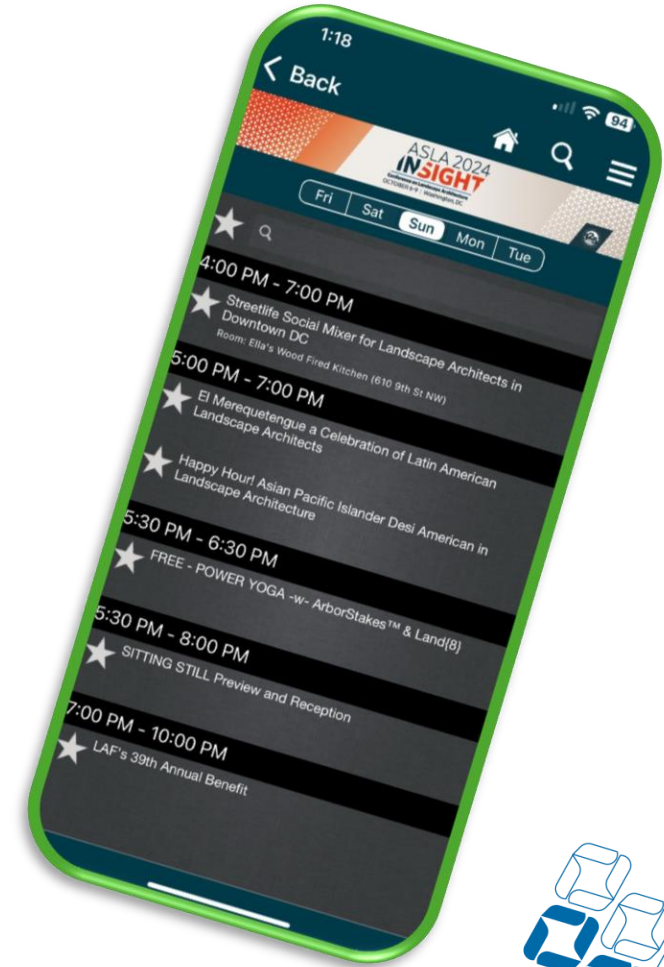
Event Listing

Feature your company's side event in the conference agenda located in the mobile app, ensuring heightened visibility among attendees. Drive engagement and participation by showcasing your brand, event details, and special offerings directly on their devices. Promote an offsite event or engaging activity to drive traffic to your booth.

\$500 | 10 available | Engagement Opportunity

Unique sponsorship benefits include

- Sponsor to provide logo and content by September 2
- Event posting can not conflict with an official ASLA scheduled event





ASLA 2025
Beyond  BOUNDARIES

Conference on Landscape Architecture
OCTOBER 10-13 • New Orleans

PRINT SIGNAGE

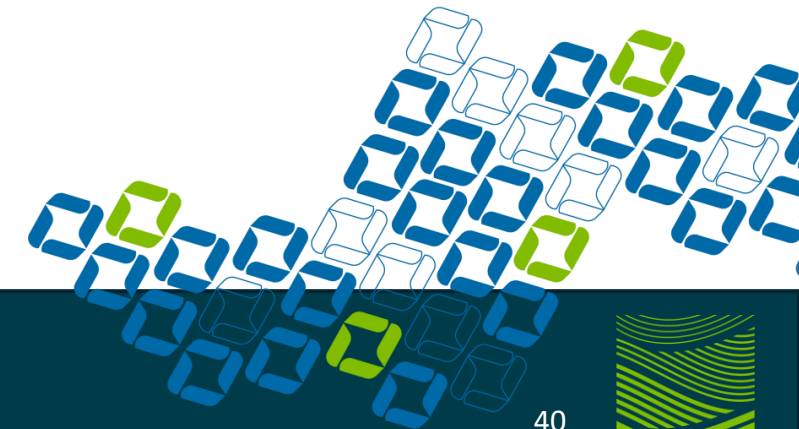
Prominent Signage- 1st Floor Columns

Elevate your brand presence with eye-catching print ads on key columns throughout the first-floor conference space. High-traffic visibility guaranteed. Columns are positioned between the conference center entrance and registration area.

\$20,000 | One available | Distinguished level benefits

Unique sponsorship benefits include

- Opportunity to brand five columns
- Sponsor to provide final artwork in pdf format by September 2
- Sponsorship includes print production, install, and dismantle of artwork



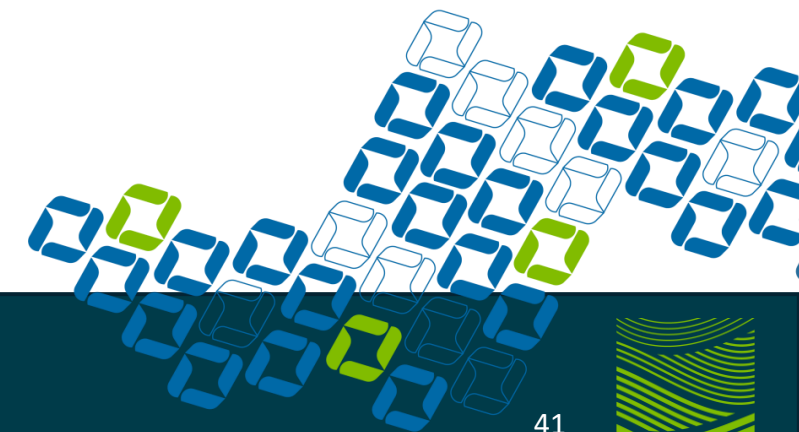
Large Print Media

A billboard-sized ad at conference is a powerful sponsorship opportunity offering unmatched visibility and impact. Positioned prominently on a high-traffic wall, your ad becomes a focal point for attendees, maximizing exposure to a captive and engaged audience.

\$10,000 Each | Champion level benefits

Unique sponsorship benefits include

- Opportunity to secure a large print banner ad
- Sponsor to provide final artwork in pdf format by September 2
- Sponsorship includes print production, install, and dismantle of artwork



Escalator Branding Package

Elevate your brand with escalator and floor sticker branding at the conference. Strategically placed on high-traffic escalators and the floor area in front, your visuals will command attention as attendees move between key event spaces. Don't miss this chance to stand out and make a lasting impression at every step of the attendee journey.

\$7,500 | One Available | Champion level benefits

Unique sponsorship benefits include

- Opportunity to brand escalator railings and floor sticker directly in front of escalator. Escalator moves attendees from registration area to education session rooms located in the convention center
- Sponsor to provide final artwork in pdf format by September 2
- Sponsorship includes print production, install, and dismantle of artwork



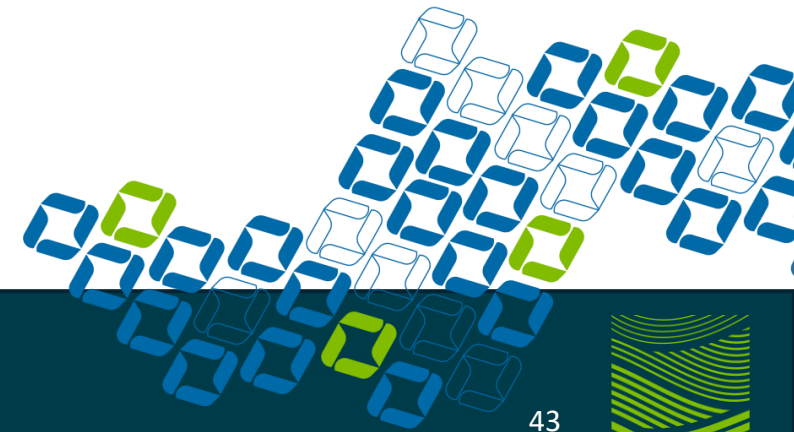
Floor Sticker – Main Avenue

Make your mark with a floor sticker sponsorship on the main avenue. Strategically positioned in the event’s busiest area, your branding will captivate attendees as they navigate the conference. This high-visibility opportunity ensures maximum exposure, reinforcing your message and driving traffic to your booth or website. Stand out where it matters most!

\$4,000 | Four available | Engagement Opportunity

Unique sponsorship benefits include

- One floor sticker placed on Main Avenue (center of EXPO floor)
- Sponsor to provide final artwork in pdf format by September 2
- Sponsorship includes print production, install, and dismantle of artwork



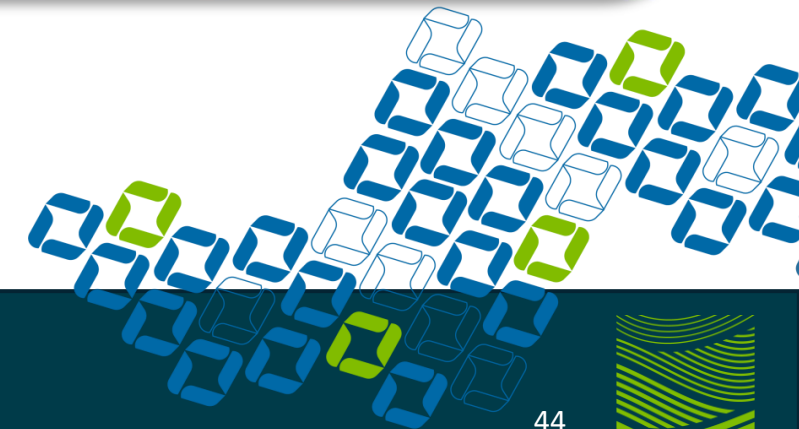
Landscape Architecture Magazine Ad

Showcase your *Landscape Architecture Magazine* ad on a prominent poster in a high-traffic conference area. This sponsorship amplifies your message, ensuring it's seen by thousands of attendees and industry leaders with your booth number.

\$1,000 | 15+ available | Engagement Opportunity

Unique sponsorship benefits include

- Sponsor to provide final artwork in pdf format by September 2
- Sponsorship includes print production, install, and dismantle of artwork



Hanging Sign

Stand out on the EXPO floor with a custom hanging sign above your booth. This premium placement ensures your brand is visible from every angle, drawing attention from attendees across the large show floor.

\$500 | Exhibitor must have a 20x20 booth or larger to purchase

Unique sponsorship benefits include

- Exhibitor to produce and ship hanging sign
- Exhibitor responsible for scheduling and payment for rigging labor
- Exhibitor to label hanging sign crate with “hanging sign” label provided in the exhibitor kit





ASLA 2025
Beyond  **BOUNDARIES**

Conference on Landscape Architecture
OCTOBER 10-13 • New Orleans

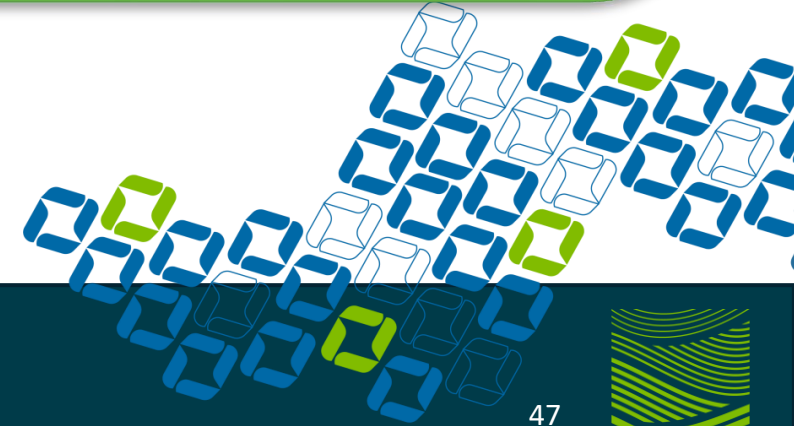
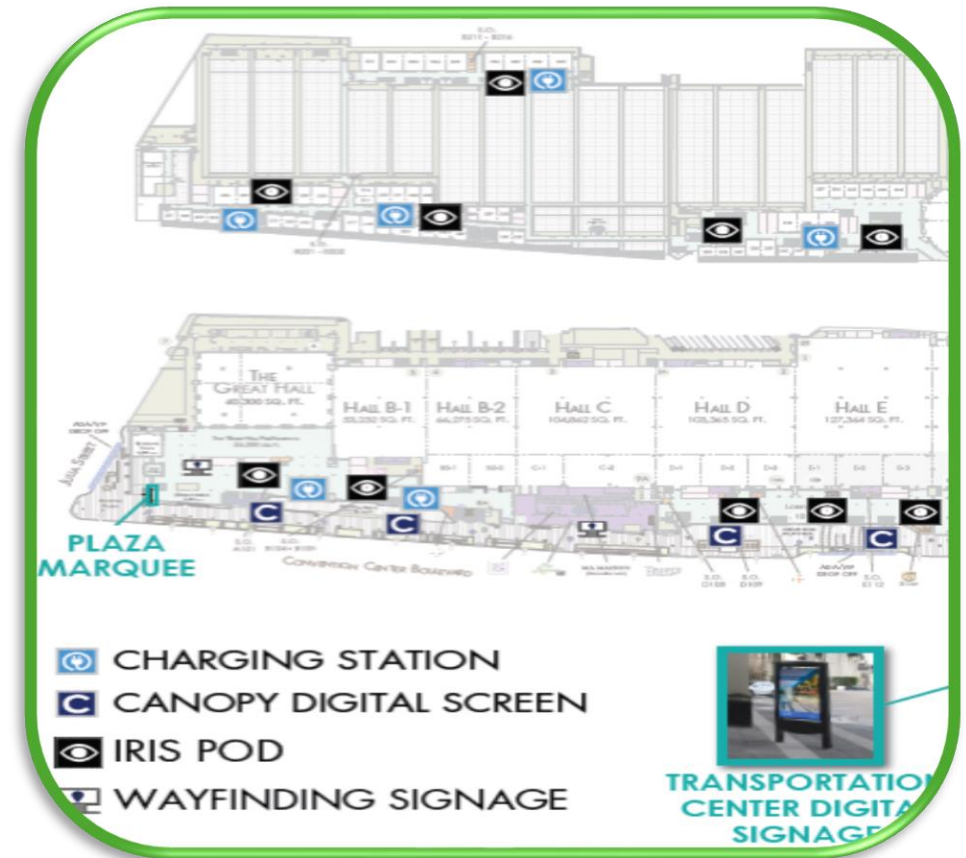
DIGITAL SIGNAGE

Digital Signage

Capture the attention of attendees with digital advertising on monitors throughout the convention center, both inside and out. Strategically placed in key areas, these ads ensure your brand is seen by thousands of attendees, maximizing visibility and engagement. Showcase your message alongside ASLA key messages and leave a lasting impression at every step of the attendee journey.

Four unique opportunities available

- IRIS monitors
- Canopy signs
- Charging/work-station monitors



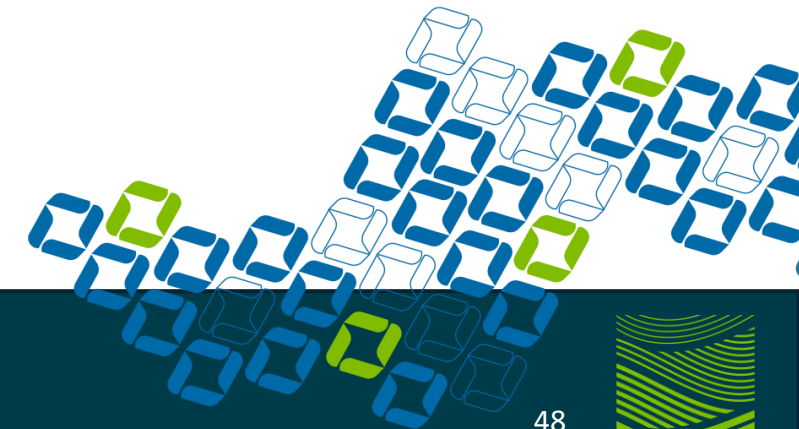
Digital Signage – Charging/ Work-Station Monitors

Elevate your brand presence with eye-catching digital ads on digital monitors located on the exterior of seven charging stations throughout the convention center. Charging stations will provide attendees with a work-station type atmosphere.

\$20,000 | One available | Strategic level benefits

Unique sponsorship benefits include

- Opportunity to brand seven (7) exterior sign locations
- Sponsor to provide final artwork by September 2



Digital Signage – IRIS Monitors

Elevate your brand presence with eye-catching digital ads in key locations throughout the first and second floor of the conference space interspersed with key ASLA conference messages.

\$12,500 | One available | Distinguished level benefits

Unique sponsorship benefits include

- Opportunity to co-brand nine monitor locations
- Sponsor to provide final artwork by September 2



Digital Signage – Canopy Signs

Elevate your brand presence with eye-catching digital ads in key locations on the exterior entrance of the convention center interspersed with key ASLA conference messages.

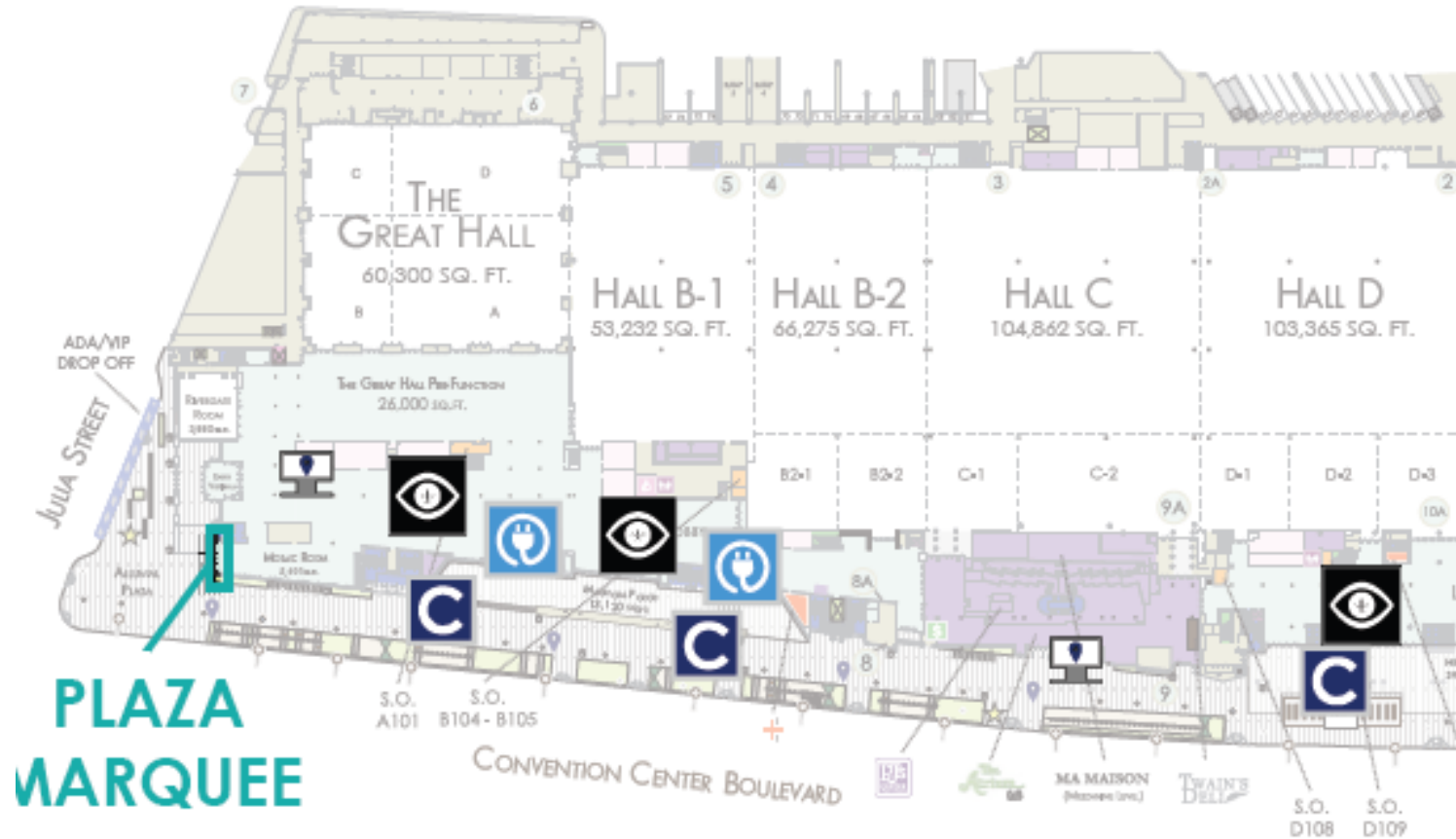
\$12,500 | One available | Distinguished level benefits

Unique sponsorship benefits include

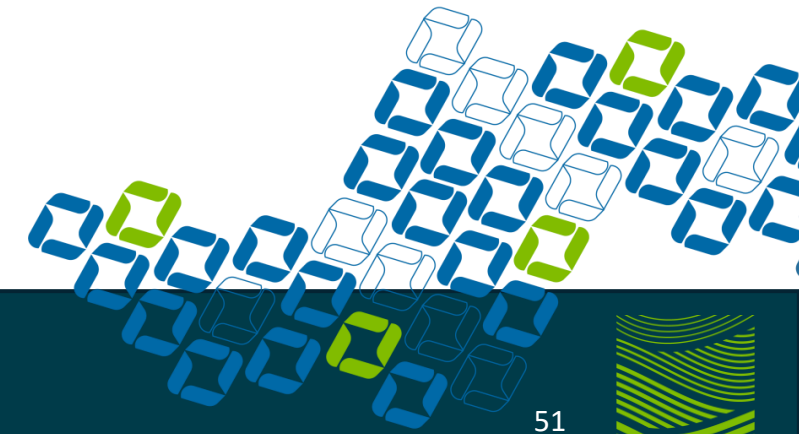
- Opportunity to co-brand four exterior sign locations
- Sponsor to provide final artwork by September 2



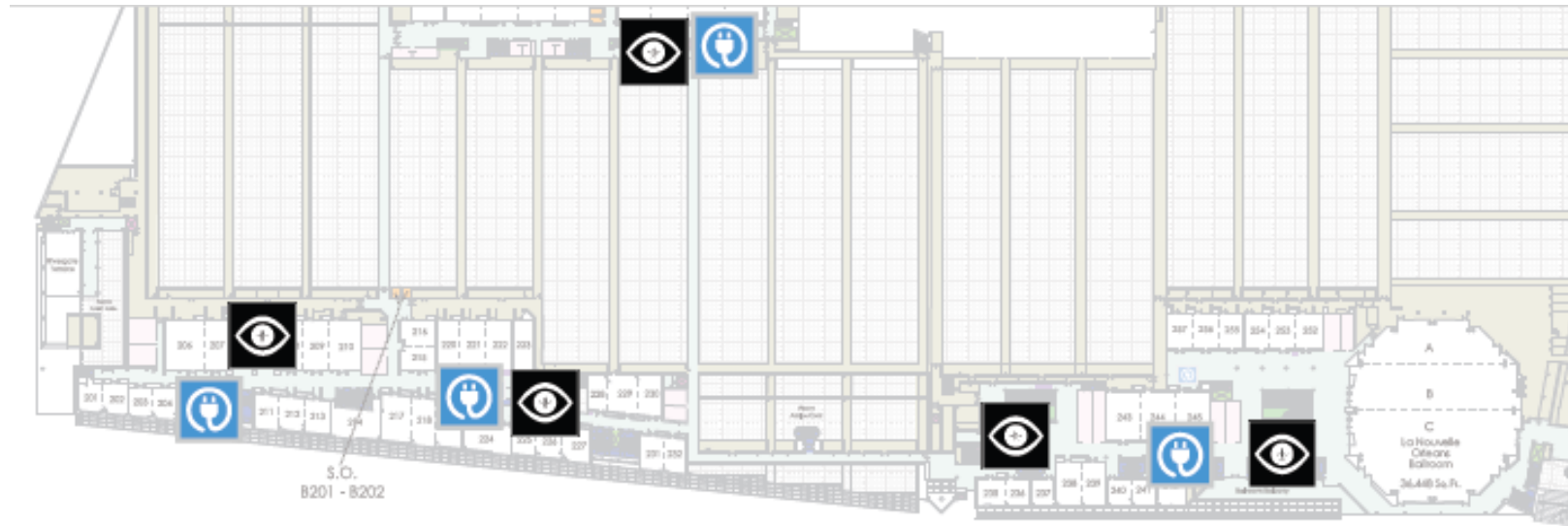
Digital Signage Locations – First Floor






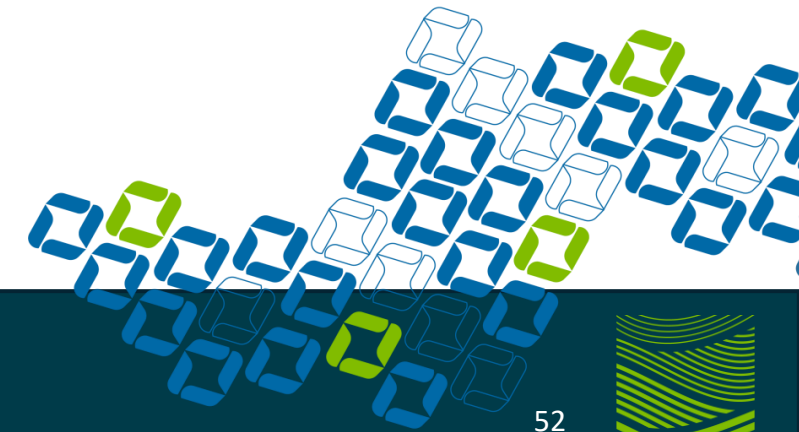
-  CHARGING STATION
-  CANOPY DIGITAL SCREEN
-  IRIS POD



Digital Signage Locations – Second Floor



-  CHARGING STATION
-  CANOPY DIGITAL SCREEN
-  IRIS POD





ASLA 2025
Beyond  BOUNDARIES

Conference on Landscape Architecture
OCTOBER 10-13 • New Orleans

HIGH ENGAGEMENT

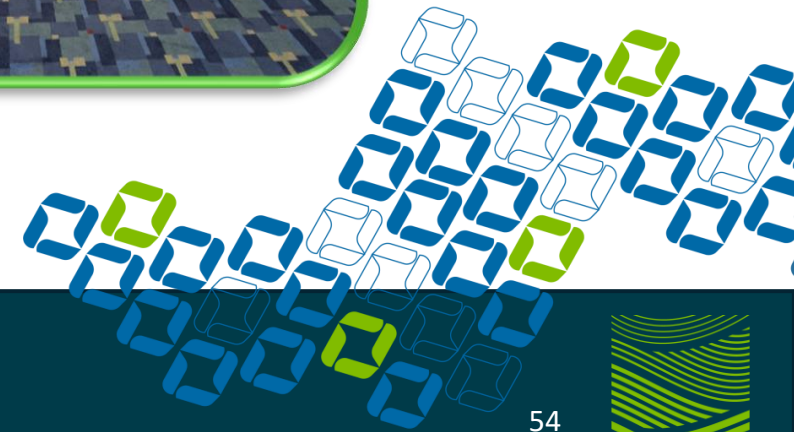
Registration Sponsorship

Unlock unparalleled brand exposure by sponsoring conference registration. As the gateway to the event, your brand will be showcased prominently, capturing the attention of every attendee from the start.

\$22,500 | One available | Distinguished level benefits

Unique sponsorship benefits include

- Your logo prominently displayed within the registration area at the conference as well as the headquarter hotel
- Sponsor recognized in advance attendee communications regarding registration details as well as registration confirmation if confirmed by March 15



Carbon Offset Sponsor

Position your brand as a sustainability leader by sponsoring carbon offset initiatives. Help reduce the event's environmental footprint while boosting your eco-conscious reputation. Help ASLA achieve its goal of offsetting 1,500 tons of greenhouse gas emissions produced by the ASLA Conference on Landscape Architecture.

\$20,000 | One available | Distinguished level benefits

Unique sponsorship benefits include

- The Carbon Offsets Program will be recognized at the conference in a prominent location
- Sponsor included in advance communications for carbon donations
- Sponsor recognition included in the annual ASLA Climate Action Report



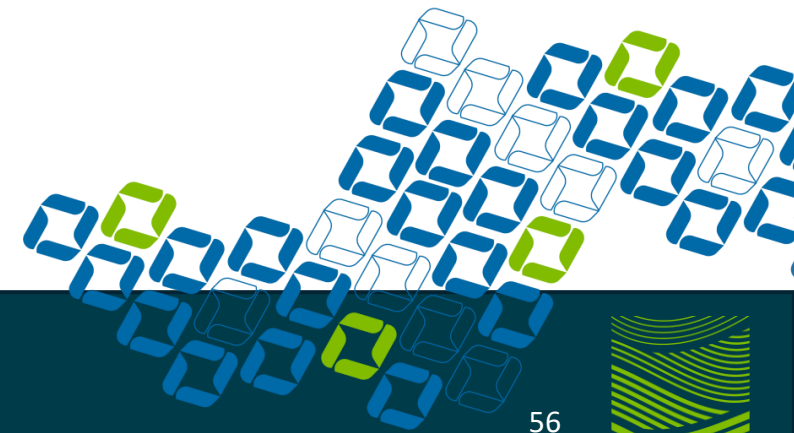
Accessibility Sponsorship

Empower inclusivity and enhance your brand's impact by sponsoring attendees' access to accessibility tools at the conference. By ensuring a seamless experience for all participants, your sponsorship reflects a commitment to diversity and equal access. Elevate your brand by championing inclusivity, making the conference more accessible for individuals with diverse needs. Gain recognition for fostering an inclusive environment and connecting with a broader audience. Make a meaningful impact by supporting accessibility tools and standing out as a brand that prioritizes the diverse needs of its audience.

\$20,000 | One available | Distinguished level benefits

Unique sponsorship benefits include

- Your logo prominently displayed within the Wordly tool to assist attendees
- Sponsor included in advance attendee communications about tools



Live Music – Play as You Go

Our goal is to engage attendees at every level. Help us set the tone in the Big Easy with live entertainment by sponsoring music performances and art during the event. Music performances will be in unique locations off the EXPO floor in high-traffic areas. Performers will include individual pianist, guitarist, etc.

\$10,000 | One available | Champion level benefits

Unique sponsorship benefits include

- Performances highlighted in the conference mobile app
- Signage positioned nearby the performance
- Sponsor recognition included advance attendee communications

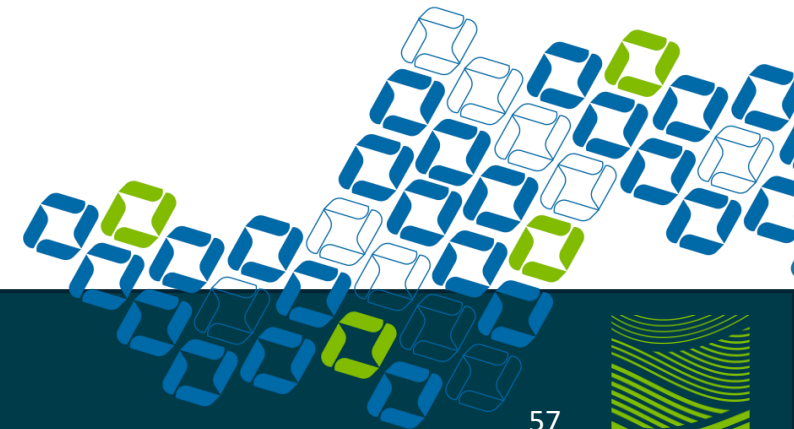


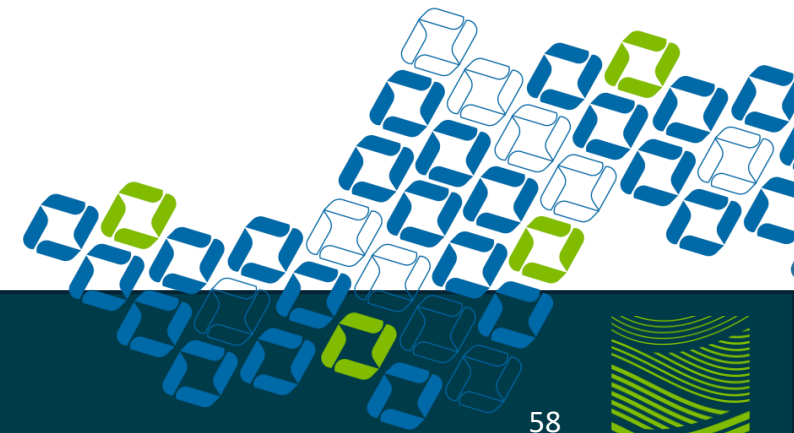
Photo Experience

Delight attendees with an interactive photo experience. Gain prime visibility as event attendees capture and share moments at a branded selfie activation. Benefit from widespread exposure on social media as users are encouraged to post. Your logo prominently displayed at the activation.

\$10,000 | Two available | Champion level benefits

Unique sponsorship benefits include

- Your brand will be visible at the activation
- Your brand will be visible during the process for attendees to access their photos



Snack Break

Add a pop of fun by sponsoring a snack break. Branded popcorn bags and signage ensure your company stands out during this enjoyable moment.

\$10,000 | One available | Champion level benefits

Unique sponsorship benefits include

- Your logo prominently displayed at each popcorn station
- Branded popcorn bags located at each snack station
- Sponsor recognition in advance attendee communications promoting the snack break



Paws for Play

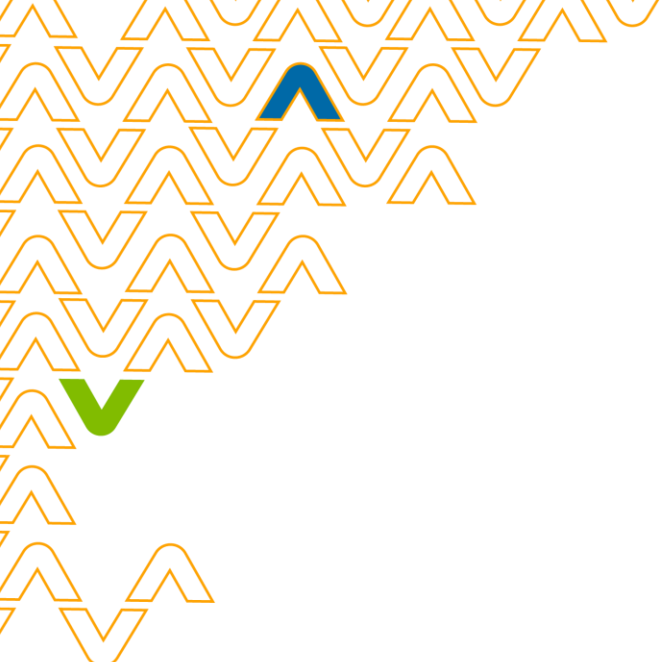
Unleash the power of relaxation and connection at the ASLA EXPO with the innovative "Paws & Play Oasis" dog park sponsorship. We understand that amidst the bustling event, attendees need moments to unwind, recharge, and find joy. That's why we're excited to offer a unique opportunity to create an unforgettable experience right on the expo floor!

\$10,000 | One available | Champion level benefits

Unique sponsorship benefits include

- Your logo prominently displayed on dog park signage
- Sponsor recognition in advance attendee communications promoting the park activities
- Dog park schedule listed in conference mobile app





< SPONSOR BENEFITS >



Premier Level Sponsorship Benefits

Premier Sponsorship Benefits - \$30,000+

- ASLA will release a branded sponsor email to the membership database on behalf of the sponsor. Content to be approved by the ASLA conference team.
- One (1) complimentary Learning Lab session. ASLA education team to approve topic and content to ensure the program qualifies for PDH credit.
- One (1) complimentary ten (10) minute interview with Torey Carter-Conneen, Chief Executive Officer of ASLA in a "state of the industry" discussion. Interview shared with ASLA membership.
- Includes all benefits listed for Distinguished, Strategic, and Champion level sponsorship

Distinguished Level Benefits

Distinguished Sponsorship Benefits - \$20,000 - \$29,999

- A 300-word feature article featuring your company and your products/services - including photos and hyperlinks - in LAND, ASLA's biweekly e-newsletter (circulation 13,000+)
- Choice of two (2) complimentary tickets to the Council of Fellows Investiture Dinner or the President's Dinner, which features the presentation of ASLA Honors and Installation of Officers. Guest names due by September 2
- One (1) complimentary article authored by a member of your team and published on the Land8 blog. Article to take a thought leader position in the field of landscape architecture.
- One (1) complimentary Lunch and Learn table. Education topic of choice to be determined by sponsor. Topic and facilitator name to be provided by September 2
- Includes all benefits listed for Strategic and Champion level sponsorship

Strategic Level Sponsorship Benefits

Strategic Sponsorship Benefits - \$15,000 - \$19,999

- Company highlighted in the conference mobile app with a robust profile.
- Your logo and booth number displayed in an advertisement to appear in Landscape Architecture Magazine, thanking sponsors (if purchased by July 1).
- Includes all benefits listed for Champion level sponsorship

Champion Level Sponsorship Benefits

Champion Sponsorship Benefits - \$7,500 - \$14,999

- Logo presence on conference signage highlighting sponsors. Your company will be recognized as a sponsor of the conference at the conference general session.
- Your logo will appear on the ASLA Conference on Landscape Architecture website, recognizing your company as a valuable sponsor of the Conference.
- Sponsor company logo included in an eblast to all conference attendees with your booth number inviting them to visit your space while at the conference (if purchased by September 2).
- Sponsor ribbons provided for name badges of registered company employees.

Thank You

Thank you for considering these sponsorship opportunities. Your support helps drive innovation, connection, and growth within the industry. Together, we can create a memorable experience for attendees while showcasing your brand's leadership and commitment. We look forward to partnering with you to make this event a resounding success!

